

THE GCI FELLOWSHIP THE MENTORSHIP 2020



INTRODUCTION

The Mentorship is a nine-month collaboration pairing individual Mentors with talented secondary school students from around the world who have been selected for the GCI Fellowship. As these students develop, refine and implement a service project focused on a pressing issue in their community, Mentors provide guidance and support. **Mentors are a critical part of the Fellowship** and have the gratifying experience of sharing their knowledge and experience with a member of the next generation of leaders and global citizens.

WHAT IS THE 10-MONTH GCI FELLOWSHIP?



GCI Fellows 2016, some in the national dress of their countries of origin, celebrate the close of the Summit and the start of the nine-month Mentorship

The GCI Fellowship begins at the Summit, a nine-day academically intensive program, where 28 secondary students, known as “Fellows” explore global issues through the lenses of engagement, ethics, excellence and leadership. The Fellows are English-speaking, intellectually gifted and come from a variety of socioeconomic backgrounds and countries.

Drawing on the Summit's academic discussions and inspirational speakers and the **United Nations Sustainable Development Goals**, Fellows identify a pressing social issue that they will address “glocally”: thinking globally by acting locally. Using the Design Thinking approach, they outline an initial action plan for what becomes their Glocal Service Project (GSP).

SUSTAINABLE DEVELOPMENT GOALS



During the nine-month Mentorship following the Summit, **Fellows collaborate with their individual Mentors by phone, email, video or in person as well as through GCI's online platform** to further scope and refine their solutions through field testing and research. We encourage each Fellow to develop and implement a GSP for the community in which they are currently based and with the goal of long-term sustainability.

HOW DO MENTORS HELP?

1. Mentors support their Fellow throughout the nine-month process as they work towards launching their GSPs and completing their GSP Reports. Mentors guide their Fellow in following the action plan they created during the Summit, and refining and updating their plans as necessary.
 - **TIP:** Time is the biggest challenge for both Fellows and Mentors. Fellows will be encouraged to seek credit for their GSPs to fulfill school requirements (i.e. Capstone, IB Program, club activity or independent study). Please remind them of this opportunity as it will enable them to work on one project and achieve two goals.
2. Mentors actively engage with their Fellows' activities on GCI's online platform and use it as a tool to provide guidance on how to refine the scope of the GSP, help the Fellows learn from challenges encountered and plan for future learning and success.
3. **Mentors connect with their Fellows each month** over the course of the Mentorship program to discuss GSP updates and help Fellows overcome any new challenges related to the GSP.
 - Connections should originate with the Fellow but Mentors are also encouraged to take initiative and reach out to their Fellow. GCI is always available should either party have difficulty getting in contact.
 - Connections can be made in person (preferable, but we recognize not always possible) or by phone, video chat, text or email. If this is not possible or the connection only requires brief communication, the Mentor and Fellow may utilize GCI's online platform or email.
4. Mentors encourage their Fellow to present the GSP to the community (i.e. school or local community center) where it takes place and share updates with GCI afterwards.

EXAMPLES OF PAST GSPs

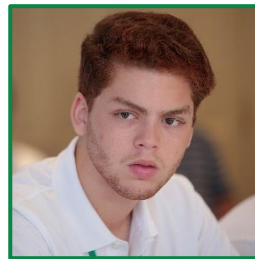
GSP: Matone De Chiwit ("Drops of Life")

Karishma (2014)

Citizenship: Kenya

Mentor: Yumi Kuwana (Global Citizens Initiative)

Matone De Chiwit developed a low-cost water purifier, made of local materials, to distribute to poorer communities in Mombasa, Kenya.



GSP: Musically United Students and Teachers (MUST)

*Seed Funding Competition Winner**

Tomas (2015)

Citizenship: Brazil

Mentor: Cleber Pellezino (MBA candidate at Columbia Business School)

MUST focuses on helping the community of Rio de Janeiro by empowering local youth and teachers as musicians. The program is still run through Escola Americana do Rio de Janeiro.

**Fellowship 2015 was the first year for Seed Funding*

GSP: Showers for the Homeless Community

Seed Funding Competition Winner

David (2016)

Citizenship: USA

Mentor: Masahisa Mitsunaga (Liner LLP)

Showers for the Homeless Community provides public and mobile showers and services to homeless individuals in Los Angeles, California, to address the dehumanization of this population.





GSP: Hobby's Got Talent

Michelle (2016)

Citizenship: Mongolia

Mentor: Vickery Prongay (Private consultant)

Hobby's Got Talent is a biennial, open talent show to promote creative learning and provide a platform for the arts to students at Hobby School of Ulaanbaatar.

GSP: Affordable and Accessible Sanitation for Women (AASW)

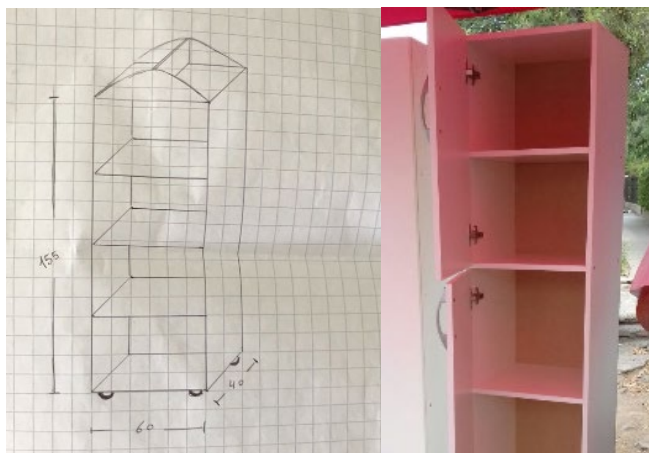
Seed Funding Competition Winner

Sydney (2017)

Citizenship: Kenya

Mentor: Mary Nyandieka (Aga Khan Academy)

AASW aimed to solve the lack of menstrual products for young girls in Mombasa, Kenya by introducing reusable sanitary pads that the girls could make for themselves.



GSP: EDULeer

Giuliana (2017)

Citizenship: Chile

Mentor: Pilar Reyes (Universidad de Chile)

EDULeer provided free reading opportunities to everyone in underprivileged and immigrant communities in Chile by creating a free, portal library system.

Overall Estimated Time Commitment from June 2020 to April 2021:

Approximately 12-15 hours in person, by phone, video chat or email

About	Mentor	Fellow
Who?	Professionals in business, law, STEM and the arts with a variety of skills and interests (especially project design and implementation), including a strong interest in working with youth	28 talented secondary school students from a variety of socioeconomic backgrounds from around the globe with an interest in addressing pressing global issues within their communities
What?	<p>Support their Fellow as they launch a Glocal Service Project (GSP). Mentors understand that they will provide guidance throughout the process and encourage their Fellow to update their action plan as necessary</p> <p>Engage with their Fellow's activity on GCI's online platform</p> <p>Connect with their Fellow each month throughout the 9 month program</p> <p>Encourage their Fellow to present the GSP to the community where it takes place and share updates with GCI afterwards</p>	<p>Attend the GCI Summit to explore global issues through the lenses of engagement, ethics, excellence and leadership. They receive tools to assist them in working on their GSP – a requirement of the 10 month program</p> <p>Work on their GSP for the following 9 months using GCI deadlines to help keep them on track</p> <p>Commit to launching a GSP at the end of the 10 month Fellowship program</p> <p>Connect with their Mentors to receive guidance and support and log all communication for GCI</p>

Time Commitment Expectations:

The following are guidelines, but Mentors and Fellows should expect that their experiences may differ due to variations amongst projects and Mentor-Fellow relationships.

Suggested Mentor Time Commitment	Mentor Expectations	Fellow Expectations
Pre-Summit: June – July 2020 1 Hour	Mentors and Fellows are matched and introduced. Once matched, the pair should arrange a time to connect for the first time. The first meeting should focus on getting to know one another and discussing any initial GSP ideas the Fellow may have	
The Summit: July 23 – July 31, 2020 ½ - 1 Hour	<p>Connect with their Fellows during the Summit over email or video chat to understand how the initial GSP idea is coming along and provide any guidance needed</p> <p>Provide guidance and feedback on the initial Action Plan online after the Fellows work on it with their Teaching Assistant</p>	Participate in the Summit and work with their peers and Teaching Assistants on their initial GSP idea and Action Plan, which they then share with their Mentors

August 2020 2 Hours	Assist Fellows with their GSP Report Draft 1 and finalizing their Action Plan for the following nine months	<ul style="list-style-type: none">• Submit GSP Report Draft 1 by August 17, 2020• Submit finalized Action Plan by August 17, 2020• Submit Summit Personal Review by August 17, 2020• Submit Monthly Cohort Update by August 31, 2020
September 2020 1 Hour	Encourage Fellows to begin making necessary connections with people and organizations in their local community and school	<ul style="list-style-type: none">• Submit Monthly Cohort Update by September 30
October 2020 1 Hour	Check in with their Fellows and assist with Draft 2 of the GSP Report, including making any necessary updates to the Action Plan	<ul style="list-style-type: none">• Submit GSP Report Draft 2 by October 31• Submit Monthly Cohort Update by October 31
November 2020 1 Hour	Engage with their Fellows by providing guidance on prototyping and field-researching for the GSP	<ul style="list-style-type: none">• Submit Monthly Cohort Update by November 30
December 2020 1 - 2 Hours	Check in with their Fellows and assist with Draft 3 of the GSP Report, including making any necessary updates to the Action Plan	<ul style="list-style-type: none">• Submit GSP Report Draft 3 by December 31• Submit Monthly Cohort Update by December 31
January 2021 1 Hour	Encourage the Fellows to reconnect with any partners and organizations assisting with the GSP after the winter holidays	<ul style="list-style-type: none">• Submit Monthly Cohort Update by January 31, 2021
February 2021 1 Hour	Provide guidance as needed as any project prototypes or in person events should begin to be firmed up and details confirmed	<ul style="list-style-type: none">• Submit Monthly Cohort Update by February 29
March 2021 1 - 2 Hours	Assist Fellows with refining the final details in preparation to launch the GSP and go over the Action Plan to see if anything has yet to be accomplished or is missing from the document	<ul style="list-style-type: none">• Refine and edit GSP Report to be ready to submit the Final Draft• Submit Monthly Cohort Update by March 31
April 2021 2 Hours	Assist Fellows with submitting the Final GSP Report, acknowledging that in person events or final products for the GSP may be continued to be worked towards after the April 30 deadline	<ul style="list-style-type: none">• Submit Final GSP Report and Launch their Project by April 30• Submit Mentorship and Fellowship Personal Reviews by April 30• Log all Mentor Connections by April 30, if they were not submitted throughout the program• Submit Monthly Cohort Update by April 30
	Brainstorm for the GSP Seed Funding Competition in May Encourage Fellows to present their GSP to the local community (i.e. school, church, etc)	
The Mentorship 2020 officially concludes		
May 2021	The GSP Seed Funding Competition opens on May 1: one Fellow will win a US\$1,000 grant to kick start their GSP and a second will win a US\$500 grant. Applications will be due May 15 The winner is announced later in the month!	

ABOUT GLOBAL CITIZENS INITIATIVE (GCI)

Global Citizens Initiative, Inc (GCI) is a 501(c)(3) nonprofit social enterprise headquartered in Greenwich, Connecticut in the United States. We empower young global citizens from all sectors of society from around the world to become lifelong leaders of positive change. Our vision is a global community where individuals embrace their unique colorful stories and cultures as they design and implement solutions to global issues that transcend social, economic and political boundaries.

Sample Nine-Month GSP Action Plan

The sample action plan below is taken from a real GSP implemented in 2015-2016.

	SUMMIT	AUG	SEP	OCT	NOV	DEC	JAN	FEB	MAR	APR
In this row, write and draw the action steps you will take. Include vacations, holidays and times of anticipated high and low productivity with the GSP	Attend the Summit Establish timeline for project Present project Productivity: HIGH	Conduct preliminary study on food insecurity Prod.: HIGH	Propose Independent Research Study on food insecurity at school Attain approval for Study Propose idea for food donation run to Head of School Cafeteria Prod.: MEDIUM (university applications)	Reach out to Community Plates and propose the creation of a new food run Continue research for Independent Study Prod.: MEDIUM (university applications)	Organize trial run before Thanksgiving Break (lots of leftovers in cafeteria that would be thrown away) Continue research for Independent Study Prod.: HIGH	Establish biweekly run with a local shelter through Community Plates Begin to consider ways food runs could be introduced at other local schools Prod.: HIGH (at the beginning of the month)	Final presentation for Independent Study on state of local food insecurity Prod.: LOW (end of semester and midterm exams)	Organize donation run before spring break Begin to develop guidelines for other schools looking to start their own food runs- collaborate with Community Plates and determine their suggestions for list Prod.: MEDIUM	Continue biweekly runs Finish guidelines for schools to create their own runs Reach out to contacts at other schools/ through Town with prepared information of food donation Prod.: MEDIUM/ LOW (donations before spring break)	Continue school food donation runs Collect end-of-school donations Help other schools organize food donations before the end of the school year Establish who will continue work for next school year Prod.: MEDIUM (exams)
Partners and collaborators you will involve	Teaching Assistant Other Fellows GCI Mentor	GCI Mentor	GCI Mentor independent Study Advisor Head of Cafeteria	GCI Mentor Independent Study Advisor Head of Cafeteria	GCI Mentor Independent Study Advisor Head of Cafeteria	GCI Mentor Independent Study Advisor Head of Cafeteria	GCI Mentor Head of Cafeteria	GCI Mentor Head of Cafeteria	GCI Mentor Head of Cafeteria	GCI Mentor Head of Cafeteria
Organizations you will reach out to		Community Plates (food rescue organization)		Community Plates Local Food Banks: Neighbor-Neighbor, Kids In Crisis	Community Plates Local Food Banks	Community Plates Local Food Banks	Community Plates Local Food Banks	Community Plates Local Food Banks	Community Plates Local Food Banks Local Town	Community Plates Local Food Banks Local Town
Potential roadblocks and challenges		Inability to coordinate with school during summer months	Difficulty coordinating with school officials during hectic back-to-school season	Collecting donations that meet health/safety criteria No response from Community Plates	Arranging logistics of trial run	Could be difficult to establish routine for biweekly runs with upcoming winter break		May have to develop formal high school donation guidelines from scratch		Difficulty determining which schools to reach out to
Resources at your disposal			Family car to transport donations	Family car to transport donations	Family car to transport donations	Family car to transport donations	Family car to transport donations	Family car to transport donations	Family car to transport donations Town Youth Program	Family car to transport donations
Resources you will have to acquire			Trays for food donations						Food donations trays for other schools	
**Due for GCI	<ul style="list-style-type: none">Attendance at the SummitSummit Presentation	<ul style="list-style-type: none">GSP Report Draft 1Action PlanSummit Personal ReviewCohort UpdateLog Mentor Connection	<ul style="list-style-type: none">Cohort UpdateLog Mentor Connection	<ul style="list-style-type: none">GSP Report Draft 2Cohort UpdateLog Mentor Connections	<ul style="list-style-type: none">Cohort UpdateLog Mentor Connections	<ul style="list-style-type: none">GSP Report Draft 3Cohort UpdateLog Mentor Connections	<ul style="list-style-type: none">Cohort UpdateLog Mentor Connections	<ul style="list-style-type: none">Cohort UpdateLog Mentor Connections	<ul style="list-style-type: none">Cohort UpdateLog Mentor Connections	<ul style="list-style-type: none">Final GSP ReportMentorship Personal ReviewFellowship Personal ReviewLog Mentor ConnectionsCohort Update